



Life in Focus

Record Your Wonderful Life Vividly by **uniarch**

About Uniarch

Uniarch is a new brand created by Uniview Technologies.

With more than **10 years of experience and technology accumulation**, we provides **easy-to-use** and **cost-effective** products in Uniarch, ranging from IP security system to video conference devices, for home and SMB business worldwide.



About Uniarch

Uniarch is founded with the vision to create environments where people and businesses are able to achieve more.

Since then, we've become a global provider committed to delivering technology-driven products and solutions, and building a community for people to connect.

Product Line: CCTV, smart office, display etc.





Mission

With its “Life in focus” in mind, Uniarch is paving the way for the changes: to achieve that, we make effort in transforming people’s day to day lives, as well as businesses of every size.

Via optimizing for **ease of use**, we leave rooms for what’s matter the most. By **business empowerment**, we entail creating an environment that fosters growth.

Uniarch envisions a world where enables everyone to a fulfilling life.

CCTV Product & Technology

uniarch



Uniarch is your Best Choice in a competitive market.

01

Complete product line & Easy-to-use products

- Advanced industrial chain
- Complete product layout
- Endless quality & safety pursuit
- Easy to use, smooth to replace

02

Continuous innovation to empower the business

- Changing post-query into pre-prevention
- Key technology for pre-prevention

Advanced Industrial Chain

Continue to enrich the product layout

Continue to iterate the products

2022



Product series and more advanced technologies are combined to enrich product line



Integrate **smart function**, supplement lights to enhance security

2022

2021



Add **switch, monitor, cables** to provide one-stop surveillance solutions



Higher resolution, sharper images and the integration of **audio** into the system provide more details.

2021

2020



IPC, NVR only, satisfy basic collection and storage needs

Supplier



Basic function for reliable **viewing, storage** and **searching**.

2020

Technical support

Powered by Uniview

R&D

uniarch

Complete Product Layout

6 product lines

IPC: 3 series, 10 appearance, 4 resolution

Infrared Camera



Fixed-lens
2/4/5MP Mic



Vari-focal
2/4/5MP WDR

Dual-light Camera



Fixed Bullet
3MP Mic

Wi-Fi Camera



Pan & Tilt camera
2MP Mic & speaker

PTZ: 2 series, 2 appearance

Infrared Camera



PTZ camera
3MP Mic & speaker

Dual-light Camera



PT camera
3MP Mic & speaker

NVR&XVR: 2 types, 3 series

NVR



S series
1HDD, 1*5MP



E series
1/2HDD, 1*4K

XVR



G series
1HDD, 5MP_N@12

Switch: 2 models



6 port POE



10 port POE

Cables: 2 series, 3 types

OFC



CAT 5/6 305m

CCA



CAT 6 100m

Monitor: 2 sizes



21.5 inch

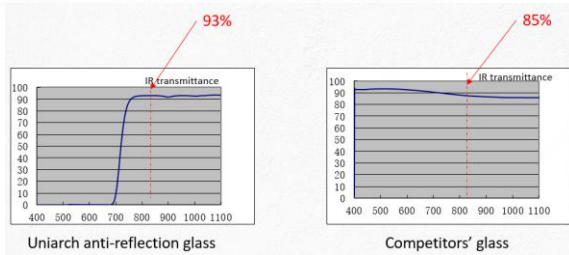


23.8 inch

Enrich product layout especially for entry-level market

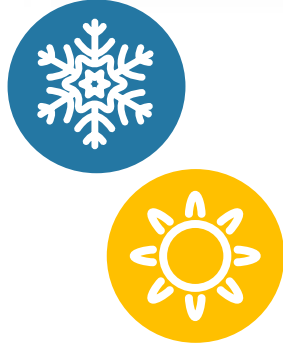
Endless Quality & Safety Pursuit

Anti-reflection glass



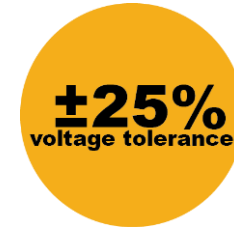
Increase the infrared transmittance as 8%

Wide temperature



Extreme operation temperature test for all outdoor products

Wide voltage



Ideal for power instability

IP67 & IK10



IP67 water proof

IK10 Vandal proof



Retrieve password



Find back the password by temporary password



by **E-mail**

Cyber security



Data protection

Video encryption, HTTPS

Limited access

ARP protection, shutdown unsafe service

Identity authentication

Strong & weak password, 802.1x, RTSP, Onvif

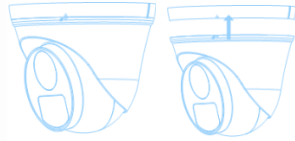
Easy to Use, Smooth to Replace

One-click upgrade



Upgrade completed with **one-click** based on Cloud

Fast dismounting design



Align marks on the base and body then easily dismount the device

ONVIF full member



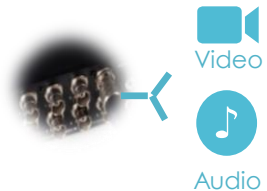
Onvif (Profile S/T), LAPI and SDK

Plug & Play



Just connect cables and power on. **ZERO extra** manpower cost.

Audio over coaxial



Minimize the amount of cabling needed

Cloud device management



City A City B

One click to access web interface of devices over cloud service

Star Product: Infrared Fixed-lens Network Camera



Key features

- 2/4/5 MP
- Built-in Mic
- Night vision with smart IR
- Motion detection
- IP67 and IK10 ingress protection



Application scenarios



Restaurant



House



Yard

Infrared cameras offers high performance with lower cost, which make it an ideal choice for entry-level market

Easy to use



One-click upgrade

Built in mic



Pick up ambient sound for an extra layer of security

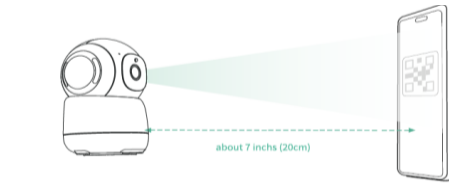
Star Product: Smart Pan & Tilt Camera



Key features:

- 2MP, 1/3" CMOS sensor
- Two-way audio
- Night vision with smart IR
- Motion detection
- Support Micro SD cards
- 2.4 GHz Wi-Fi

Easy to use



Set up in minutes by simply downloading the app and connecting the camera to Wi-Fi/Ethernet



Budget friendly

Do more with less

Endless quality pursuit



Stability test



Image test



Lens test



Scene test

Application scenarios



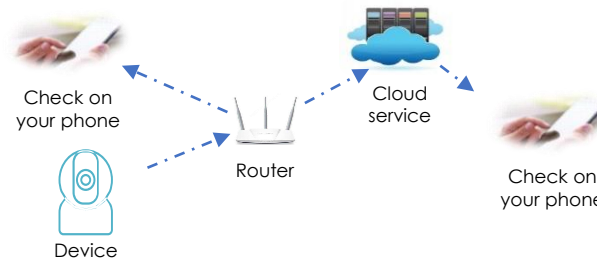
Apartment



Retail

Free to place camera on a shelf or fix it to your wall or ceiling

Cyber security



Data protection:

GDPR, Video encryption, https

Feature-rich



Digital zoom



Smart IR



Motion detection



AI function



Smart tracking



Remote viewing

Guarantee the **hardware**
Take more advantage of the **software**

Uniarch is your Best Choice in a competitive market.

01

Complete product line & Easy-to-use products

Advanced industrial chain

Complete product layout

Endless quality & safety pursuit

Easy to use, smooth to replace

02

Continuous innovation to empower the business

Changing post-query into pre-prevention

Key technology for pre-prevention

Changing Post-query into Pre-prevention

Uniarch provides affordable choices to satisfy the market demand



After-event backtracking

Collect the events and easy to retrieve



During-event interference

Warning with lights and sound

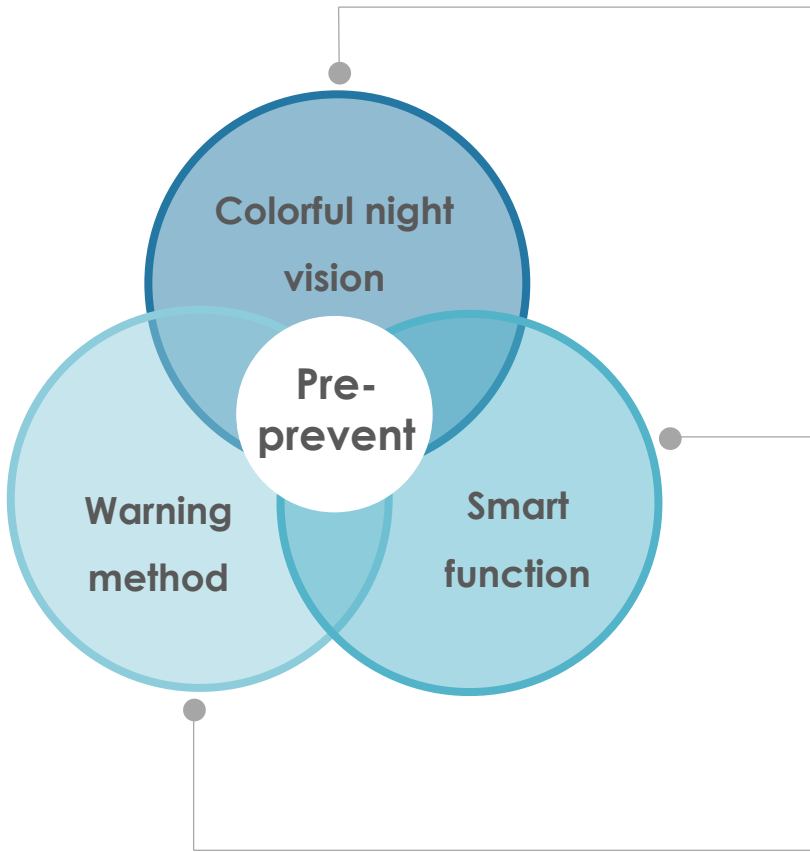


Pre-event deterrence

Deterrent before events happened

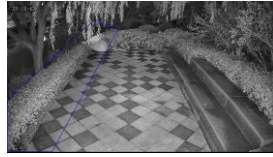
Key Technology for Pre-prevention

Dual-light technology



Danger often occurs under darkness, dual-light technology enable **to capture events clearly and provide richer details** even in low-light environments.

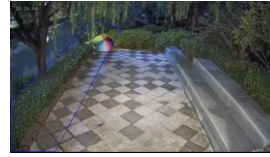
Infrared lights mode



Black and white image



Warm lights mode



Colorful image



Automatic adjusting



Adjust the brightness to ensure details

The accuracy of the alert can improve the security efficiency, dual-light technology allows to trigger the alarm **only when human body is detected**.



Motion detection



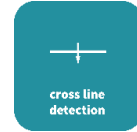
Distinguish



Detect human body and marked with a rectangle



intrusion detection



cross line detection



Human Body Detection

Alert before things happen, stop the illegal events immediately with **sound and lights**.



Sound

Built in speaker



Lights

Three smart dual-light mode

IR mode: IR on  WL flicker

WL mode: WL on  WL on

Dual-light: IR on  WL on

Star Product: Dual-light Bullet Camera




Key features

- 3MP, 1/2.8" CMOS sensor
- Dual-light technology
- Up to 50m supplement light distance
- Built in mic
- Three supplement lights mode
- IP67 ingress protection

Advanced hardware



 Built in mic

 4 warm lights and
2 infrared lights

Provide richer details and restore the real scene

Smart dual-light mode



IR mode

Turn on infrared light, trigger warm light shinning when preset are detected



Warm light mode

Turn on warm lights, automatically adjust the brightness for clear image



Dual light mode

Switch from infrared lights to warm lights when the preset are detected

Application scenarios



Fish ponds



orchards



Retail

Dual-light bullet camera can be applied in wider scenarios where colorful images and additional deterrent are necessary

Smart function



Human body detection

Detect the person and marked with a rectangle

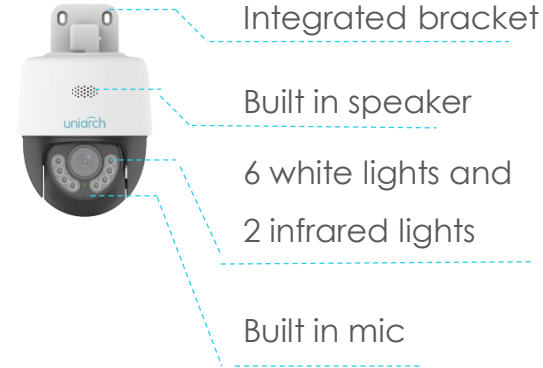
Star Product: Dual-light PT Camera (Coming Soon)



Key features

- 3MP, 1/2.8" CMOS sensor
- Dual-light technology
- Up to 30m supplement light distance
- Built in mic and speaker
- Three supplement lights mode
- IP66 ingress protection

Advanced hardware



Easy to install

Integrated bracket support wall mounting and ceiling



Application scenarios



Yard



Retail



Warehouse

Dual-light PT camera can be applied in wider scenarios where colorful images and addition deterrent are necessary

Smart dual-light mode

- Intrusion detection
(Based on human)



- Three dual-light mode

IR mode: IR on **Trigger** WL flicker

WL mode: WL on **Trigger** WL on

Dual-light: IR on **Trigger** WL on

Smart office Product & Technology

uniarch



Extend from CCTV to Smart Office

Wider product lines for diverse demands



Smart office

Uniarch smart office products enable people to break the barrier of location and increase the global workforce.

With several audio core technologies, Unear video conferencing product is able to give users perfect meeting experience.

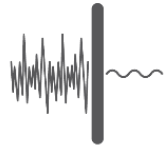


Hear extraordinary
bring meetings alive



Perfect Meeting Experience with Advanced Technologies

Core audio technologies



Noise Suppression



Automatic Gain Control



Full-duplex Technology



Echo Cancellation

Core video technologies



Adaptive Field of View



Auto Light Correction



High Quality Resolution



Distortionless Lens

Complete Product Layout

3
Product
Series

All-in-One Series

All-in-one video camera

2MP, Fov 90°
4 Mics, 3m
sound pick-up



A20

All-in-one video bar

A30T

2MP, Fov 100°
4 Mics, 5m
sound pick-up



A30

4MP, Fov 115°
4 Mics, 5m sound
pick-up



A50E

4K, Fov 118°
5Mics, 5m sound
pick-up
3 AI Functions

Video Series

Webcam

2k, FOV 83°
2 mics, 3m voice &
area pickup



V20

PTZ Camera

1080p, Wide 99.4°, tele 29.6°
3X optical Zoom
Mechanical 350° pan and 50° tilt



V50

Audio Series

Headset

2 mics
40mm audio unit
Noise suppression



HS20

Speakerphone

4 directional mics,
5m voice pick-up



M30

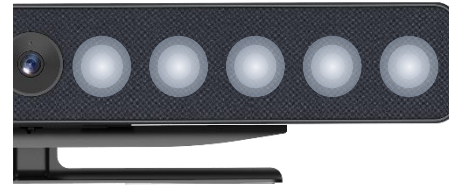
Open Workspaces

Conference Rooms

A50E: All-in-one Video Conference Bar



Advanced Audio Technology



- **5-element** omnidirectional **microphones array**, pickup sound clearly within **5 meters**
- Embedded multiple audio algorithms, **noise suppression**, **full-duplex**, and **echo cancellation**, realize immersive communication

Key features:

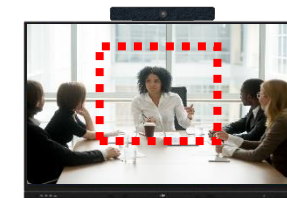
- 4k, 118° wide angle-of-view
- AI functions Speaker Tracking, Auto Framing and Close-up Group
- 5 Mics, 5-meter sound pick up range

Industry-leading AI functions



Auto Framing

Automatic framing of all the participants when participants enter or move around the room.



Speaker Tracking

Quickly locate the active speaker and transfer to the next speaker smoothly based on different delay time settings

V50: PTZ Camera



Brilliantly sharp video

2MP, 3X optical Zoom and Auto focus

Mechanical 350° pan and 50° tilt

Whisper-quiet mechanical Pan/Tilt/Zoom

4 Camera Presets

One-click shot switching by **remote control**



Key features:

- 1080p, Wide 99.4°, tele 29.6°
- 3X optical Zoom
- Mechanical 350° pan and 50° tilt
- 4 presets positions
- Privacy Protection

Facial Detection



With unique face detection technology, V50 can show the clear face after focusing

Reassuring Privacy Protection

When not in the video call, the lens defaults to a parked position which pointing downward 25°



M30: Speakerphone



Key features:

- 4 Directional Microphones Array
- 5 meters sound pick-up range
- Full-duplex Communication
- Noise Suppression, Echo Cancellation

Full-duplex Communication

M30 provides clear and bright full-duplex communication, it's as simple to have a meeting as in the same room.



Noise Suppression, Echo Cancellation

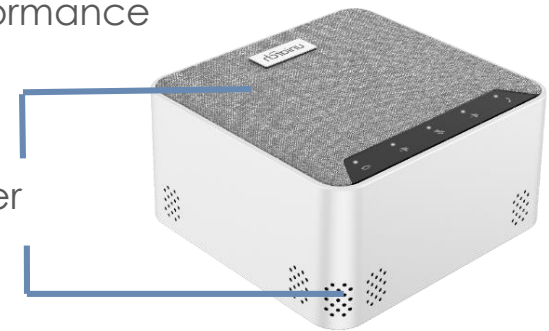
The application of directional microphones and AI algorithms can effectively identify and filter out the background noise & echo

4-Directional Microphones Array

Directional microphones have better audio performance such as noise suppression and reverberation.

Acoustic Structure Separation

The professional audio structure of separate speaker and microphones designation reduces nonlinear echoes.



About Uniview Company

uniarch



Uniview Strength

6.07
billion

Revenue in 2021
(RMB)

Tripled

In 5 years

14 International subsidiaries
and branch offices

1 Intelligent
manufacturing base

9 In preparation

Worldwide
Business coverage

Pioneering R&D Strength

6 R&D centers **2** R&D institutes

3000+ Patents applied
Daily new case

Over 80% Invention patent ratio

Over 50% Employees in the R&D
departments

Over 10% Annual revenue invested in
R&D

Top 4 Global Market Share

World Rank

Quality Defender

- First released “high quality surveillance”
- 3rd largest in china

Overseas Expander

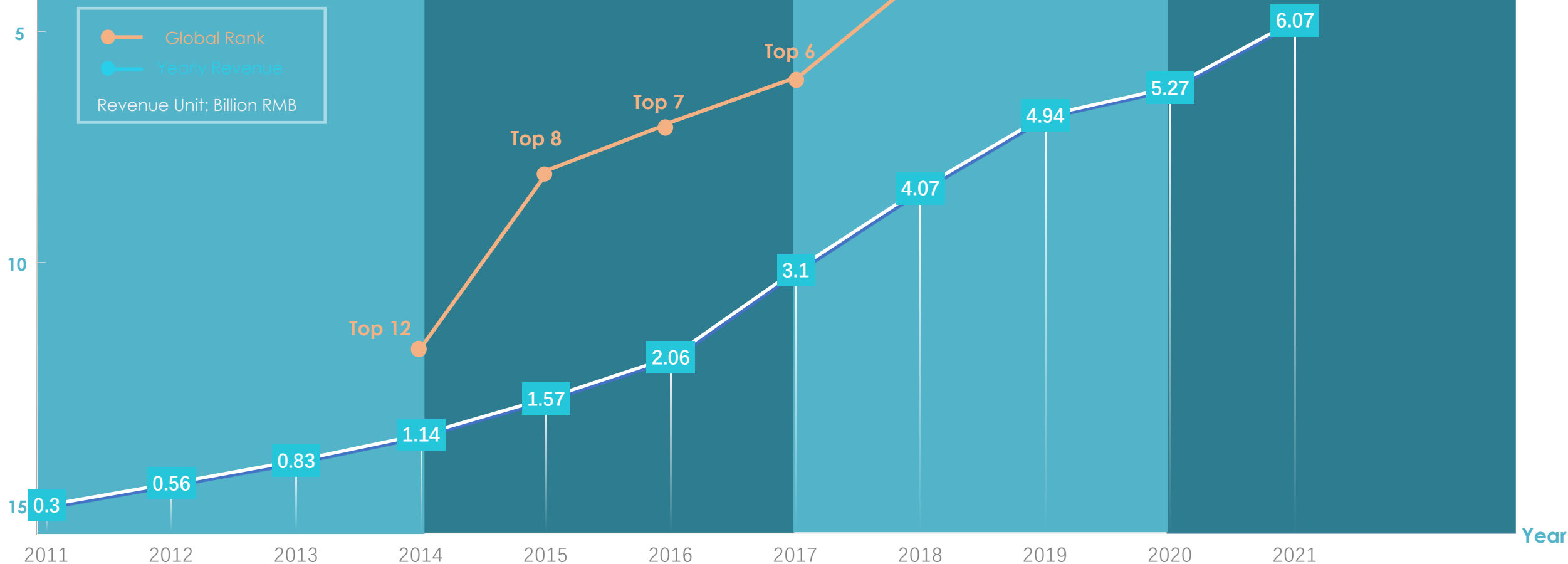
- Marched into international market
- Solution covered 140+ countries

Partner Enabler

- Landed Local offices worldwide
- Achieved products and solution global coverage

Industry Transformer

- Transforming into digital marketing
- Pushing new form of technology innovation



End-to-end Rigorous Quality Control



Intelligent Manufacturing, Lean Production



Global Intelligent Manufacturing Base

- 2,0000 m² Manufacturing Bases in China
- Tongxiang & Jiaxing bases' production capacity: 8,0000 units per day
- India factories: 500,0000 units per year
- Employees: more than 1,000 people.

AGV Robots: Efficiency Improvement



- Manufacturing centers, logistics and storage centers. Employees: more than 1,000 people.

Fully Automatic SMT Production Line



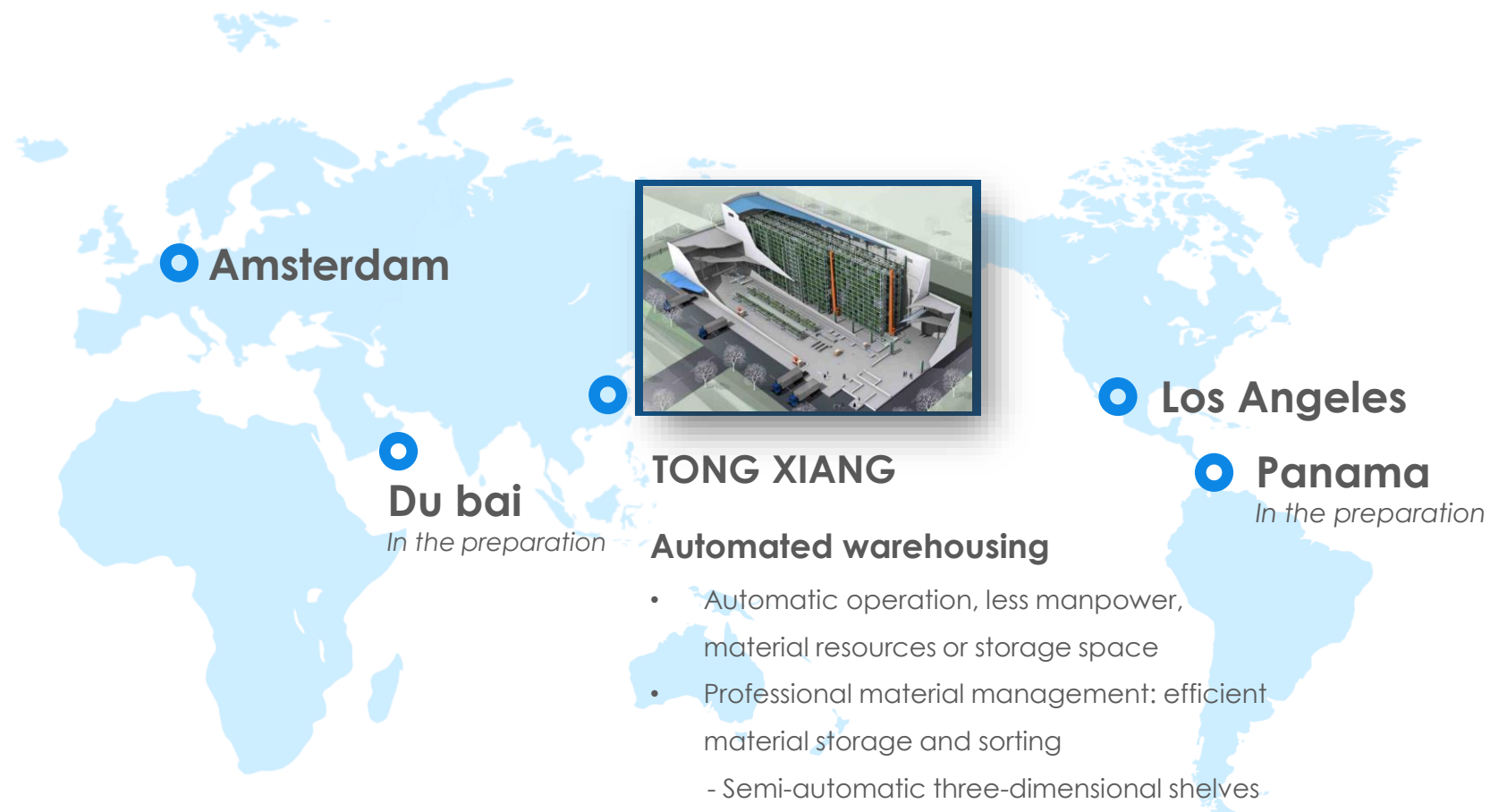
- Annual output of high-end video surveillance products exceeds 8 million units, with an output value of over 615 million USD

First-rate Delivery Ability, Globalized Logistics

5
warehouses

Located in 5 main ports covering Europe, America, Middle East and Asia

10
million
pcs shipment in 2021



● **Amsterdam**

● **Du bai**
In the preparation



TONG XIANG

Automated warehousing

- Automatic operation, less manpower, material resources or storage space
- Professional material management: efficient material storage and sorting
 - Semi-automatic three-dimensional shelves
 - WMS system control
 - ESD and temperature and humidity control

● **Los Angeles**

● **Panama**
In the preparation

Partnership

uniarch



In-depth Global Coverage

Global

- 1 500+ sales & marketing employees

- 2 200 countries & 3000 cities channel coverage

- 3 40+ key countries with local team

China

- 1 1500+ sales & marketing employees

- 2 3000+ cities and counties business coverage

- 3 110+ cities with local team

Business-driven Partner Policy



Focus

- Flexible exclusive customized channel policy
- Multiple authorization mode: Exclusive/Regional exclusive/Online distributor



Profitability

- Price competitiveness
- High cost performance
- Unified End-user price strategy
- Online price control mechanisms



Growth

- Increased SKU display
- Extensible AIOT channel
- Explore more blue ocean together



Life in Focus

Record Your Wonderful Life Vividly by [uniarch](#)